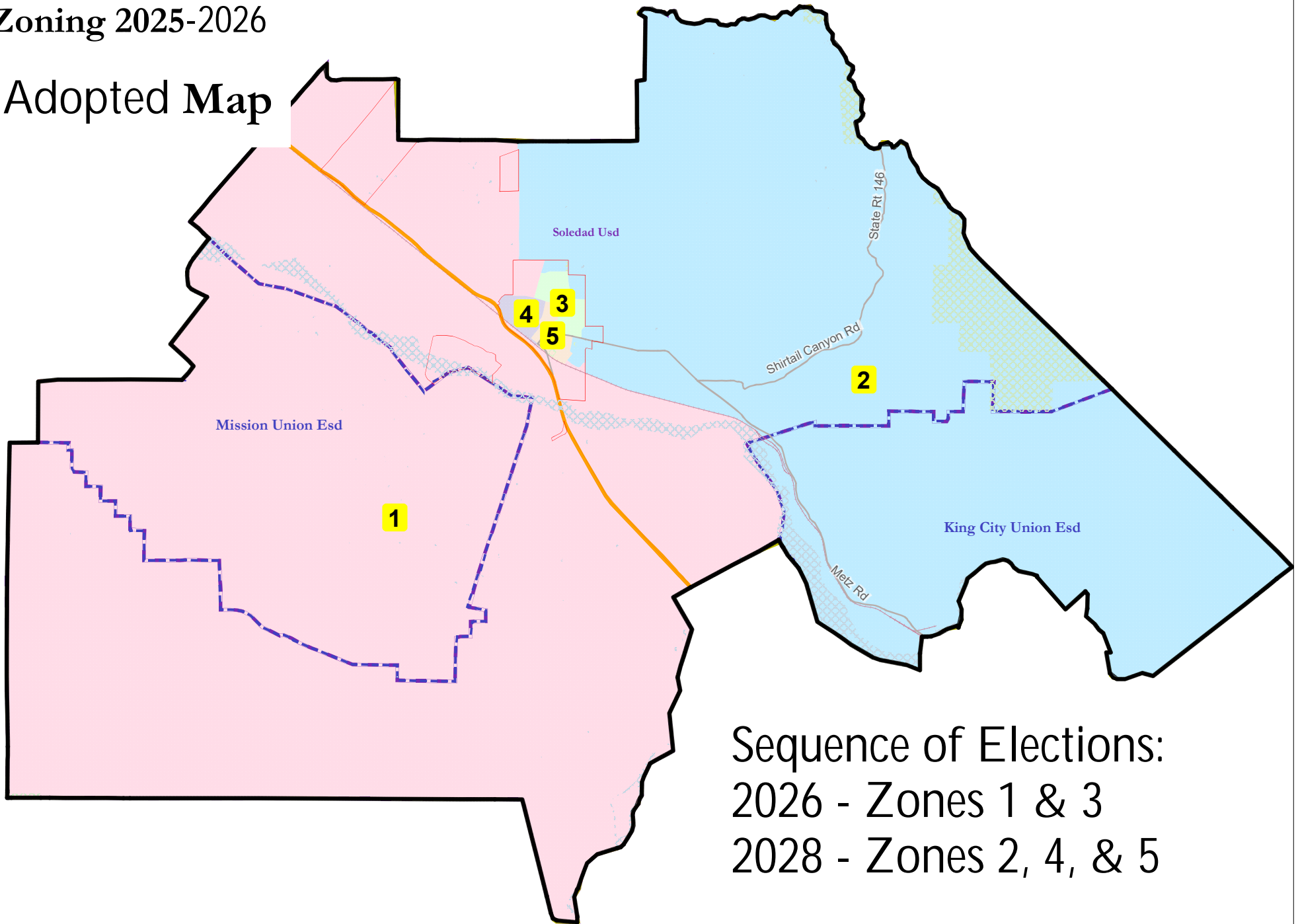
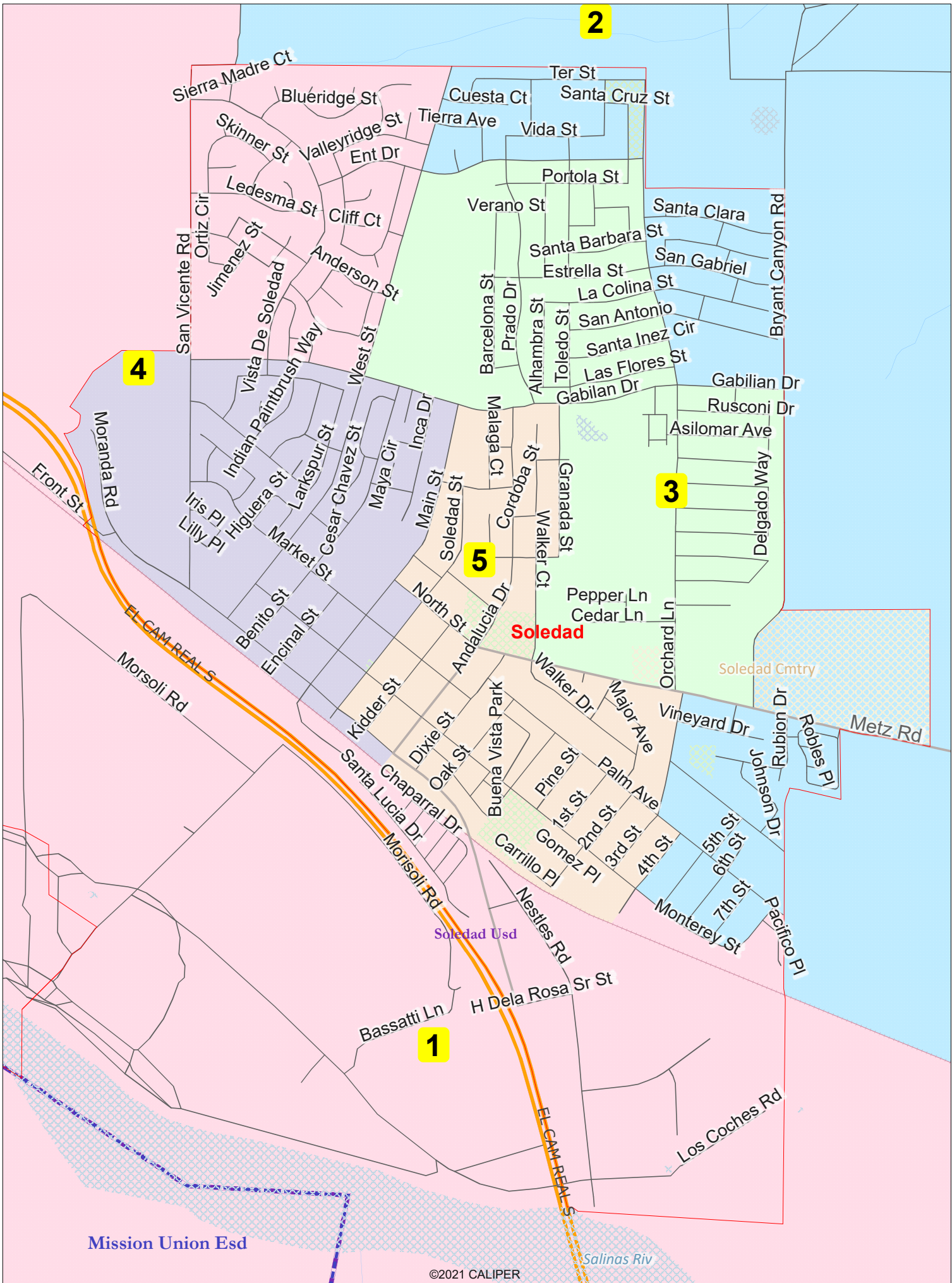


Soledad Health Care District Zoning 2025-2026

Adopted Map



Sequence of Elections:
2026 - Zones 1 & 3
2028 - Zones 2, 4, & 5



Mission Union Esd

Adopted Map							
District		1	2	3	4	5	Total
	Total Pop	4,155	3,982	4,037	4,002	4,000	20,176
	Deviation from ideal	120	-53	2	-33	-35	173
	% Deviation	2.97%	-1.31%	0.05%	-0.82%	-0.87%	4.29%
Total Pop	% Hisp	85.0%	87%	87%	94%	92%	89%
	% NH White	10%	8%	7%	2%	4%	6%
	% NH Black	1%	1%	1%	0%	0%	1%
	% Asian-American	3%	3%	4%	2%	2%	2%
Citizen Voting Age Pop	Total	1,994	1,563	1,666	1,282	1,369	7,873
	% Hisp	78%	85%	84%	91%	91%	85%
	% NH White	22%	10%	5%	5%	5%	10%
	% NH Black	0%	0%	0%	0%	0%	0%
	% Asian/Pac.Isl.	0%	4%	11%	4%	4%	5%
Voter Registration (Nov 2022)	Total	1,973	1,796	1,964	1,399	1,477	8,609
	% Latino est.	84%	91%	89%	98%	95%	91%
	% Spanish-Surnamed	76%	82%	80%	88%	85%	82%
	% Asian-Surnamed	1%	1%	1%	1%	1%	1%
	% Filipino-Surnamed	2%	2%	2%	2%	2%	2%
	% NH White est.	11%	6%	6%	-1%	2%	5%
	% NH Black	0%	0%	0%	0%	0%	0%
Voter Turnout (Nov 2022)	Total	802	594	702	414	463	2,975
	% Latino est.	73%	84%	83%	92%	88%	83%
	% Spanish-Surnamed	66%	76%	75%	83%	79%	74%
	% Asian-Surnamed	2%	1%	1%	1%	1%	1%
	% Filipino-Surnamed	2%	1%	1%	2%	2%	2%
	% NH White est.	20%	12%	11%	4%	7%	12%
	% NH Black	0%	0%	0%	0%	0%	0%
Voter Turnout (Nov 2020)	Total	1,259	1,262	1,198	898	1,059	5,676
	% Latino est.	76%	84%	85%	91%	89%	85%
	% Spanish-Surnamed	70%	77%	78%	86%	82%	78%
	% Asian-Surnamed	2%	1%	1%	0%	1%	1%
	% Filipino-Surnamed	2%	2%	2%	2%	2%	2%
	% NH White est.	24%	18%	18%	10%	13%	17%
	% NH Black est.	0%	0%	0%	0%	0%	0%
ACS Pop. Est.	Total	4,250	3,426	3,679	3,666	3,802	18,822
Age	age0-19	35%	35%	39%	41%	35%	37%
	age20-60	52%	54%	50%	51%	53%	52%
	age60plus	14%	11%	11%	8%	11%	11%
Immigration	immigrants	32%	33%	35%	35%	38%	34%
	naturalized	19%	21%	28%	24%	21%	23%
Language spoken at home	english	31%	27%	22%	18%	7%	21%
	spanish	69%	71%	75%	77%	92%	77%
	asian-lang	0%	2%	3%	5%	1%	2%
	other lang	0%	0%	0%	0%	1%	0%
Language Fluency	Speaks Eng. "Less than Very Well"	27%	36%	29%	41%	43%	35%
Education (among those age 25+)	hs-grad	55%	46%	54%	36%	32%	45%
	bachelor	8%	6%	6%	4%	5%	6%
	graduatedegree	6%	3%	4%	5%	1%	4%
Child in Household	child-under18	42%	44%	68%	70%	59%	56%
Pct of Pop. Age 16+	employed	54%	66%	59%	54%	60%	59%
Household Income	income 0-25k	13%	5%	6%	13%	12%	10%
	income 25-50k	16%	13%	17%	20%	22%	17%
	income 50-75k	14%	18%	8%	13%	16%	14%
	income 75-200k	45%	50%	59%	45%	48%	49%
	income 200k-plus	12%	13%	9%	9%	3%	9%
Housing Stats	single family	93%	95%	82%	69%	72%	83%
	multi-family	7%	5%	18%	31%	28%	17%
	rented	32%	28%	30%	60%	53%	40%
	owned	68%	72%	70%	40%	47%	60%
Total population data from the 2020 Decennial Census.							
Surname-based Voter Registration and Turnout data from the California Statewide Database.							
Latino voter registration and turnout data are Spanish-surname counts adjusted using Census Population Department undercount estimates. NH White and NH Black registration and turnout counts estimated by NDC. Citizen Voting Age Pop., Age, Immigration, and other demographics from the 2018-2022 5-year American Community Survey and Special Tabulation data.							